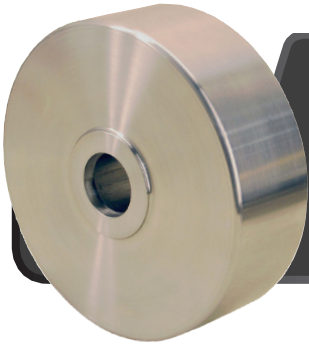




# 304 WHEELS

**304 STAINLESS STEEL**

**600-3,500 LBS**



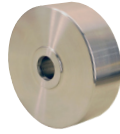
## FEATURES

**BEARINGS:** Plain, Stainless Steel Ball, Delrin, Stainless Steel Precision Ball, Stainless Steel Roller  
**TEMPERATURE:** 250°F (max for load rating)  
 Up to 800°F (please contact office for details)  
**COLOURS:** Steel Grey

**HARDNESS:** Brinell 123  
**DESCRIPTION:** 304 wheels are toughened for strength and longevity. While the 304 wheel is always competitive for its weight, it is mainly used for rugged and concrete floors. This wheel could cause floor wear and it is rather noisy.

### EXCELLENT FOR:

- Bacteria-free environments
- Corrosive environments
- Factory use
- Food processing
- Chemical plants
- Pharmaceutical
- Platform trucks
- Autoclaves
- Animal Cages
- Heavy material handling
- Easy rolling
- Heavy loads
- Moisture friendly environments



304 STAINLESS



V GROOVE 304

### OPTIONS:

- BBSS Stainless Steel Ball Bearing
- DB Delrin Bearing
- PBSS Stainless Steel Precision Ball Bearing
- RB Stainless Steel Roller Bearing (only)

WHEEL						PART NUMBER			
Diameter	Tread Width	Capacity Lbs.	Hub Length	Standard Bore	Alternative Bore	Bearing Type	Part Number	Wheel Weight (lbs)	
3"	1 1/2"	600	1 5/8"	1 3/16"	5/16" * 3/8" * 1/2" * 3/4"	Plain	W-6203-304	2.64	
		600	1 13/16"	1/2"	3/4"	Roller	W-6203-304-RB	3.10	
		600	1 5/8"	1 3/16"	5/16" * 3/8" * 1/2" * 3/4"	Plain	W-6203-VG304	2.11	
		600	1 13/16"	1/2"	3/4"	Roller	W-6203-VG304-RB	2.57	
4"	1 1/2"	600	1 5/8"	1 3/16"	5/16" * 3/8" * 1/2" * 3/4"	Plain	W-6204-304	5.03	
		600	1 13/16"	1/2"	3/4"	Roller	W-6204-304-RB	5.49	
		600	1 5/8"	1 3/16"	5/16" * 3/8" * 1/2" * 3/4"	Plain	W-6204-VG304	4.28	
		600	1 13/16"	1/2"	3/4"	Roller	W-6204-VG304-RB	4.74	
	2"	850	2 3/16"	1 3/16"	1/2" * 3/4"	Plain	W-7004-304	6.71	
		850	2 3/8"	1/2"	3/4"	Roller	W-7004-304-RB	7.24	
5"	2"	950	2 3/16"	1 3/16"	1/2" * 3/4"	Plain	W-7005-304	10.79	
		950	2 3/8"	1/2"	3/4"	Roller	W-7005-304-RB	11.32	
		950	2 3/16"	1 3/16"	1/2" * 3/4"	Plain	W-7005-VG304	9.85	
		950	2 3/8"	1/2"	3/4"	Roller	W-7005-VG304-RB	10.38	
	2"	1,200	2 3/16"	1 3/16"	1/2" * 3/4"	Plain	W-7006-304	15.77	
		1,200	2 3/8"	1/2"	3/4"	Roller	W-7006-304-RB	16.30	
6"	2"	1,200	2 3/16"	1 3/16"	1/2" * 3/4"	Plain	W-7006-VG304	14.79	
		1,200	2 3/8"	1/2"	3/4"	Roller	W-7006-VG304-RB	15.32	
		3,500	3 1/4"	1 15/16"	-	Plain	W-9106-304	22.22	
		3,500	3 7/16"	3/4"	1" * 1 1/4"	Roller	W-9106-304-RB	24.21	
	3"	3,500	3 1/4"	1 15/16"	-	Plain	W-9106-VG304	21.18	
		3,500	3 7/16"	3/4"	1" * 1 1/4"	Roller	W-9106-VG304-RB	23.17	

\* Custom sizes available



## WHEELS

WHEEL							PART NUMBER		
Diameter	Tread Width	Capacity Lbs.	Hub Length	Standard Bore	Alternative Bore	Bearing Type	Part Number	Wheel Weight (lbs)	
8"	2"	1,500	2 3/16"	1 3/16"	1/2" * 3/4"	Plain Roller	W-7008-304	28.47	
		1,500	2 3/8"	1/2"	3/4"		W-7008-304-RB	29.00	
		1,500	2 3/16"	1 3/16"	1/2" * 3/4"	Plain Roller	W-7008-VG304	26.96	
		1,500	2 3/8"	1/2"	3/4"		W-7008-VG304-RB	27.49	
	3"	3,500	3 1/4"	1 15/16"	3/4" * 1" * 1 1/4"	Plain Roller	W-9108-304	41.28	
		3,500	3 7/16"	3/4"	1" * 1 1/4"		W-9108-304-RB	43.27	
10"	3"	3,500	3 1/4"	1 15/16"	3/4" * 1" * 1 1/4"	Plain Roller	W-9110-304	65.80	
		3,500	3 7/16"	3/4"	1" * 1 1/4"		W-9110-304-RB	67.79	
		3,500	3 1/4"	1 15/16"	3/4" * 1" * 1 1/4"	Plain Roller	W-9110-VG304	64.03	
		3,500	3 7/16"	3/4"	1" * 1 1/4"		W-9110-VG304-RB	66.02	
12"		3"	3,500	3 1/4"	1 15/16"	3/4" * 1" * 1 1/4"	Plain Roller	W-9112-304	95.76
			3,500	3 7/16"	3/4"	1" * 1 1/4"		W-9112-304-RB	97.76

\* Custom sizes available