



5300 SERIES

450 LBS

FEATURES

KINGPIN: 9/16" diameter coined rivet
RACEWAY: 1/4" diameter upper & lower race hardened steel load bearings.
BUSHING: Roller bearings with drilled hardened steel spanner bushing and steel side washers.

AXLE&NUT: 3/8" axle and lock nut
FINISH: Corrosion resistant bright zinc
HARDENED: Washers
LEG SPACING: 2 1/4"
SPECIAL: Wide wheel accommodates for those heavy loads.

EXCELLENT FOR:

- Housekeeping & linen carts
- Kitchen dollies
- Bakery equipment
- Hospital & medical equipment
- Store fixtures
- Medium duty uses
- Stock trucks
- Mobile warehousing equipment
- Institutional uses



WHEEL

CASTER

PART NUMBER

OPTIONS:

- TLB Top Locking Brake
- DB Delrin Bearing
- NB Nylon Roller Bearing
- PB Precision Ball Bearing
- RBC Caged Roller Bearing
- C Raceway Seal
- EXP Expandable Stems
- HO Bolt Hole (for threaded stems)
- HT Heat Treated Yoke
- SWH Heat-treated Side Washers
- TG Thread Guards
- Z Zerk in Axle

FINISHES:

- 53?4F Black Flat
 - 53?4G Black Gloss
 - 53?4I Black Ionic
 - 53?1 Brass Lacquer
 - 53?2 Chrome
- Inquiries on other finishes welcome

* Caster weight and OH based on Plate
 * See stem options for overall height (OH) differences

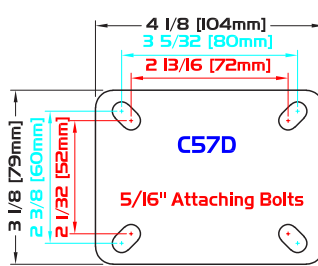
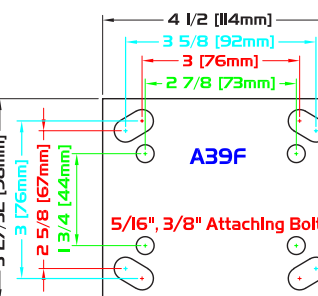
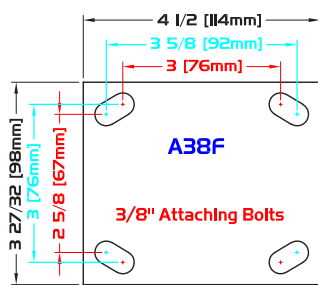
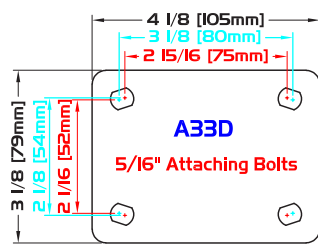
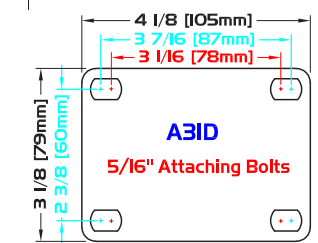
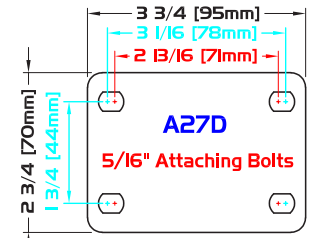
Diameter	Tread Width	Capacity Lbs.	Bearing Type	Swivel Radius	Overall Height	Wheel Type	Swivel	Caster Weight (lbs)	Rigid	Caster Weight (lbs)
4"	2"	400	Roller	3 3/8"	5"	Moldon Alum. Rubber	S5343-***-MAR-RB	2.92	R5343-***-MAR-RB	2.37
		400	Roller			Moldon Poly. Urethane	S5343-***-MPU-RB	2.50	R5343-***-MPU-RB	1.95
		400	Roller			Moldon Rubber	S5343-***-MR-RB	4.42	R5343-***-MR-RB	3.87
		400	Roller			ProTech™ Crown	S5343-***-PRO-RB	2.42	R5343-***-PRO-RB	1.87
		450	Roller			ALTHane™	S5343-***-ALT-RB	2.34	R5343-***-ALT-RB	1.79
		450	Roller			High Temp Phenolic (475°)	S5343-***-HTPH-RB	3.03	R5343-***-HTPH-RB	2.48
		450	Roller			Lava™ (475°)	S5343-***-LV-RB	2.35	R5343-***-LV-RB	1.80
		450	Roller			Lava™-WOW (475°)	S5343-***-LVW-RB	2.61	R5343-***-LVW-RB	2.06
		450	Roller			Moldon Alum. Urethane	S5343-***-MAU-RB	2.72	R5343-***-MAU-RB	2.17
		450	Roller			Nyroll™	S5343-***-NYNW-RB	2.50	R5343-***-NYNW-RB	1.95
		450	Roller			Phenolic	S5343-***-PH-RB	2.73	R5343-***-PH-RB	2.18
		450	Roller			Polyolefin	S5343-***-POX-RB	2.14	R5343-***-POX-RB	1.59
		450	Roller			Retort-WOW	S5343-***-RETW-RB	2.35	R5343-***-RETW-RB	1.81
		450	Roller			RollX™	S5343-***-RX-RB	2.35	R5343-***-RX-RB	1.80
		450	Roller			RollX™-WOW	S5343-***-RXW-RB	2.61	R5343-***-RXW-RB	2.06
		450	Roller			Solid Steel	S5343-***-SS-RB	4.32	R5343-***-SS-RB	3.77
		450	Roller			Envirothane™	S5343-***-U-RB	2.54	R5343-***-U-RB	2.00
		450	Roller			Envirothane™ Grey-WOW-RB	S5343-***-UGW-RB	2.54	R5343-***-UGW-RB	2.00
		450	Roller			Moldon Urethane	S5343-***-UR-RB	4.02	R5343-***-UR-RB	3.47
		450	Roller			Moldon Urethane Crown	S5343-***-URC-RB	4.14	R5343-***-URC-RB	3.59
450	Roller	V Groove	S5343-***-VG-RB	5.34	R5343-***-VG-RB	4.79				
5"	2"	350	Steel	4"	6"	Soft Rubber	S5353-***-SR	3.43	R5353-***-SR	2.80
		350	Roller			Soft Rubber	S5353-***-SR-RB	3.65	R5353-***-SR-RB	3.02
		425	Roller			ProTech™ Crown	S5353-***-PRO-RB	2.86	R5353-***-PRO-RB	2.23
		425	Roller			Moldon Poly. Urethane	S5353-***-MPU-RB	3.10	R5353-***-MPU-RB	2.47
		450	Roller			ALTHane™	S5353-***-ALT-RB	2.72	R5353-***-ALT-RB	2.09
		450	Roller			Ductile Iron Crowned	S5353-***-DIC-RB	5.94	R5353-***-DIC-RB	5.31
		450	Roller			High Temp Phenolic (475°)	S5353-***-HTPH-RB	3.32	R5353-***-HTPH-RB	2.69
		450	Roller			Lava™ (475°)	S5353-***-LV-RB	2.66	R5353-***-LV-RB	2.03
		450	Roller			Lava™-WOW (475°)	S5353-***-LVW-RB	3.02	R5353-***-LVW-RB	2.39
		450	Roller			Moldon Alum. Rubber	S5353-***-MAR-RB	3.32	R5353-***-MAR-RB	2.69
		450	Roller			Moldon Alum. Urethane	S5353-***-MAU-RB	3.22	R5353-***-MAU-RB	2.59
		450	Roller			Moldon Rubber	S5353-***-MR-RB	4.54	R5353-***-MR-RB	3.91
		450	Roller			Nyroll™	S5353-***-NYNW-RB	2.96	R5353-***-NYNW-RB	2.33
		450	Roller			Phenolic	S5353-***-PH-RB	3.32	R5353-***-PH-RB	2.69
		450	Roller			Polyolefin	S5353-***-POX-RB	2.37	R5353-***-POX-RB	1.74
		450	Roller			Retort-WOW	S5353-***-RETW-RB	2.66	R5353-***-RETW-RB	2.03
		450	Roller			RollX™	S5353-***-RX-RB	2.66	R5353-***-RX-RB	2.03
		450	Roller			RollX™-WOW	S5353-***-RXW-RB	3.02	R5353-***-RXW-RB	2.39
		450	Roller			Solid Steel	S5353-***-SS-RB	5.36	R5353-***-SS-RB	4.73
		450	Roller			Envirothane™	S5353-***-U-RB	3.12	R5353-***-U-RB	2.49
450	Roller	Envirothane™ Grey-WOW-RB	S5353-***-UGW-RB	3.12	R5353-***-UGW-RB	2.49				
450	Roller	Moldon Urethane	S5353-***-UR-RB	5.16	R5353-***-UR-RB	4.53				
450	Roller	Moldon Urethane Crown	S5353-***-URC-RB	4.46	R5353-***-URC-RB	3.83				
450	Roller	V Groove	S5353-***-VG-RB	6.38	R5353-***-VG-RB	5.75				



STANDARD PLATE: **A27D**

Plate Thickness: 3/32"

PLATE DIAGRAMS



WHEEL

CASTER

PART NUMBER

Diameter	Tread Width	Capacity Lbs.	Bearing Type	Swivel Radius	Overall Height	Wheel Type	Swivel	Caster Weight (lbs)	Rigid	Caster Weight (lbs)
6"	2"	450	Roller	4 5/8"	7"	ALThane™	S5363-***-ALT-RB	3.35	R5363-***-ALT-RB	2.75
		450	Roller			ALThane™-WOW	S5363-***-ALTWOW-RB	3.35	R5363-***-ALTWOW-RB	2.75
		450	Roller			Ductile Iron Crowned	S5363-***-DIC-RB	7.04	R5363-***-DIC-RB	6.44
		450	Roller			High Temp Phenolic (475°)	S5363-***-HTPH-RB	4.20	R5363-***-HTPH-RB	3.60
		450	Roller			Lava™ (475°)	S5363-***-LV-RB	2.96	R5363-***-LV-RB	2.36
		450	Roller			Lava™-WOW (475°)	S5363-***-LVW-RB	3.26	R5363-***-LVW-RB	2.66
		450	Roller			Moldon Alum. Rubber	S5363-***-MAR-RB	3.92	R5363-***-MAR-RB	3.32
		450	Roller			Moldon Alum. Urethane	S5363-***-MAU-RB	3.88	R5363-***-MAU-RB	3.28
		450	Roller			Moldon Poly. Urethane	S5363-***-MPU-RB	3.70	R5363-***-MPU-RB	3.10
		450	Roller			Moldon Rubber	S5363-***-MR-RB	5.60	R5363-***-MR-RB	5.00
		450	Roller			Nyroll™	S5363-***-NYNW-RB	3.51	R5363-***-NYNW-RB	2.91
		450	Roller			Phenolic	S5363-***-PH-RB	4.20	R5363-***-PH-RB	3.60
		450	Roller			Polyolefin	S5363-***-POX-RB	2.61	R5363-***-POX-RB	2.01
		450	Roller			ProTech™ Crown	S5363-***-PRO-RB	3.24	R5363-***-PRO-RB	2.64
		450	Roller			ProTech™ Flat	S5363-***-PROF-RB	3.24	R5363-***-PROF-RB	2.64
		450	Roller			Retort-WOW	S5363-***-RETW-RB	2.96	R5363-***-RETW-RB	2.36
		450	Roller			RollX™	S5363-***-RX-RB	2.96	R5363-***-RX-RB	2.36
		450	Roller			RollX™-WOW	S5363-***-RXW-RB	3.26	R5363-***-RXW-RB	2.66
		450	Roller			Solid Steel	S5363-***-SS-RB	6.58	R5363-***-SS-RB	5.98
		450	Roller			Envirothane™	S5363-***-U-RB	3.88	R5363-***-U-RB	3.28
		450	Roller			Envirothane™ Grey-WOW-RB	S5363-***-UGW-RB	3.88	R5363-***-UGW-RB	3.28
		450	Precision			Envirothane™ Grey Crowned- PB	S5363-***-UGC-PB	3.60	R5363-***-UGC-PB	3.00
		450	Roller			Moldon Urethane	S5363-***-UR-RB	6.06	R5363-***-UR-RB	5.46
		450	Roller			Moldon Urethane Crown	S5363-***-URC-RB	5.47	R5363-***-URC-RB	4.87
		450	Roller			V Groove	S5363-***-VG-RB	7.70	R5363-***-VG-RB	7.10

* Caster weight and OH based on Plate

* See stem options for overall height (OH) differences

STEMS

THREADED STEMS -.0625" [1.59mm] To Std OH

***	DIAMETER	LENGTH	TYPE
1/2-13X4HO	1/2"	4"	NC
5/8-11X4HO	5/8"	4"	NC
3/4-10X4HO	3/4"	4"	NC
7/8-9X4HO	7/8"	4"	NC
1-8X4HO	1"	4"	NC



Threaded Stem

ROUND STEMS -.0625" [1.59mm] To Std OH

***	DIAMETER	LENGTH	TYPE
500 X 4	1/2"	4"	Plain
625 X 4	5/8"	4"	Plain
750 X 4	3/4"	4"	Plain
875 X 4	7/8"	4"	Plain
1.000 X 4	1"	4"	Plain
1.375 X 4	1 3/8"	4"	Plain



Round Stem

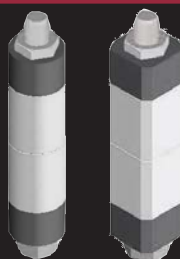
BOLT HOLES -.0625" [1.59mm] To Std OH

***	DIAMETER
3/8HOLE	3/8"
7/16HOLE	7/16"
1/2HOLE	1/2"
5/8HOLE	5/8"



Bolt Hole

EXPANDABLE STEMS



-.0625" [1.59mm] To Std OH

See Page 60 for Expandable Stem sizes.