



6900 FORGED SERIES

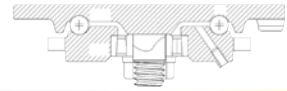
1,600 LBS



FEATURES

KINGPIN: 3/4" diameter integral kingpin and nut
RACEWAY: 7/16" diameter upper ball race with tapered roller thrust bearing
BUSHING: Roller bearings with drilled hardened steel spanner bushing and plastic side washers

AXLE&NUT: 1/2" zerk axle and lock nut (except with PB)
FINISH: Corrosion resistant bright zinc
LUBRICATION: Grease nipple in lower race
LEG SPACING: 2 1/2"



EXCELLENT FOR:

- Industrial Platforms
- Garbage & Cargo containers
- Dolly carts
- All other hard working industrial functions



WHEEL

CASTER

PART NUMBER

OPTIONS:

- TSB Thumb Screw Brake
- UWB Universal Wheel Brake
- BB Ball Bearing
- BR Bronze Bearing
- DB Delrin Bearing
- NB Nylon Roller Bearing
- PB Precision Ball Bearing
- RBC Caged Roller Bearing
- DW Double Welding
- SSW Steel Side Washer
- SWH Heat-treated Side Washer
- TG Thread Guards
- Z Zerk in Wheel

SPECIAL:

Drop forged steel top plate AISI 1045.
 Double deep grooved raceway.

Diameter	Tread Width	Capacity Lbs.	Bearing Type	Swivel Radius	Overall Height	Wheel Type	Swivel	Caster Weight (lbs)	Rigid	Caster Weight (lbs)
4"	2"	400	Roller	3 13/16"	5 5/8"	Moldon Alum. Rubber	S6904-A46H-MAR-RB	8.61	R6904-A46H-MAR-RB	5.63
		400	Roller			Moldon Rubber	S6904-A46H-MR-RB	10.11	R6904-A46H-MR-RB	7.13
		400	Roller			ProTech™ Crown	S6904-A46H-PRO-RB	8.11	R6904-A46H-PRO-RB	5.13
		550	Roller			Polyolefin	S6904-A46H-POX-RB	7.83	R6904-A46H-POX-RB	4.85
		600	Roller			High Temp Phenolic (475°)	S6904-A46H-HTPH-RB	8.82	R6904-A46H-HTPH-RB	5.84
		700	Roller			Moldon Poly. Urethane	S6904-A46H-MPU-RB	8.19	R6904-A46H-MPU-RB	5.21
		700	Roller			Solid Steel	S6904-A46H-SS-RB	10.01	R6904-A46H-SS-RB	7.03
		750	Roller			ALTHane™	S6904-A46H-ALT-RB	8.03	R6904-A46H-ALT-RB	5.05
		800	Roller			Lava™ (475°)	S6904-A46H-LV-RB	8.09	R6904-A46H-LV-RB	5.11
		800	Roller			Moldon Alum. Urethane	S6904-A46H-MAU-RB	8.41	R6904-A46H-MAU-RB	5.43
		800	Roller			Phenolic	S6904-A46H-PH-RB	8.42	R6904-A46H-PH-RB	5.44
		800	Roller			RollX™	S6904-A46H-RX-RB	8.04	R6904-A46H-RX-RB	5.06
		800	Roller			Moldon Urethane	S6904-A46H-UR-RB	9.71	R6904-A46H-UR-RB	6.73
		800	Roller			Moldon Urethane Crown	S6904-A46H-URC-RB	9.83	R6904-A46H-URC-RB	6.85
		900	Roller			Lava™-WOW (475°)	S6904-A46H-LVW-RB	8.30	R6904-A46H-LVW-RB	5.32
		900	Precision			PurThane™	S6904-A46H-PTN-PB	8.35	R6904-A46H-PTN-PB	5.37
		1,000	Roller			Nyroll™	S6904-A46H-NYNW-RB	8.19	R6904-A46H-NYNW-RB	5.21
		1,000	Roller			Envirothane™	S6904-A46H-U-RB	8.23	R6904-A46H-U-RB	5.25
		1,000	Precision			Envirothane™ Grey - PB	S6904-A46H-UG-PB	8.23	R6904-A46H-UG-PB	5.25
		1,000	Roller			Envirothane™ Grey-WOW-RB	S6904-A46H-UGW-RB	8.23	R6904-A46H-UGW-RB	5.25
1,000	Roller	V Groove	S6904-A46H-VG-RB	11.03	R6904-A46H-VG-RB	8.05				
1,400	Roller	RollX™-WOW	S6904-A46H-RXW-RB	8.30	R6904-A46H-RXW-RB	5.32				
5"	2"	350	Ball	4 3/4"	6 1/2"	Alum. Rubber Grey	S6905-A46H-ARG-BB	9.39	R6905-A46H-ARG-BB	6.63
		350	Roller			Soft Rubber	S6905-A46H-SR-RB	9.36	R6905-A46H-SR-RB	6.60
		425	Roller			ProTech™ Crown	S6905-A46H-PRO-RB	8.57	R6905-A46H-PRO-RB	5.81
		450	Roller			Moldon Rubber	S6905-A46H-MR-RB	10.25	R6905-A46H-MR-RB	7.49
		500	Roller			Moldon Alum. Rubber	S6905-A46H-MAR-RB	9.03	R6905-A46H-MAR-RB	6.27
		650	Roller			Polyolefin	S6905-A46H-POX-RB	8.08	R6905-A46H-POX-RB	5.32
		750	Roller			High Temp Phenolic (475°)	S6905-A46H-HTPH-RB	9.13	R6905-A46H-HTPH-RB	6.37
		800	Roller			Lava™ (475°)	S6905-A46H-LV-RB	8.42	R6905-A46H-LV-RB	5.66
		900	Roller			Moldon Poly. Urethane	S6905-A46H-MPU-RB	8.81	R6905-A46H-MPU-RB	6.05
		950	Roller			ALTHane™	S6905-A46H-ALT-RB	8.43	R6905-A46H-ALT-RB	5.67
		1,000	Roller			Moldon Alum. Urethane	S6905-A46H-MAU-RB	8.93	R6905-A46H-MAU-RB	6.17
		1,000	Roller			Nyroll™	S6905-A46H-NYNW-RB	8.67	R6905-A46H-NYNW-RB	5.91
		1,000	Roller			Phenolic	S6905-A46H-PH-RB	9.03	R6905-A46H-PH-RB	6.27
		1,000	Precision			PurThane™	S6905-A46H-PTN-PB	9.29	R6905-A46H-PTN-PB	6.53
		1,000	Roller			RollX™	S6905-A46H-RX-RB	8.37	R6905-A46H-RX-RB	5.61
		1,000	Roller			Solid Steel	S6905-A46H-SS-RB	11.07	R6905-A46H-SS-RB	8.31
		1,000	Roller			Envirothane™	S6905-A46H-U-RB	8.83	R6905-A46H-U-RB	6.07
		1,000	Precision			Envirothane™ Grey - PB	S6905-A46H-UG-PB	8.89	R6905-A46H-UG-PB	6.13
		1,000	Roller			Envirothane™ Grey-WOW-RB	S6905-A46H-UGW-RB	8.83	R6905-A46H-UGW-RB	6.07
		1,100	Roller			Lava™-WOW (475°)	S6905-A46H-LVW-RB	7.73	R6905-A46H-LVW-RB	5.97
		1,200	Roller			Moldon Urethane	S6905-A46H-UR-RB	10.87	R6905-A46H-UR-RB	8.11
		1,200	Roller			Moldon Urethane Crown	S6905-A46H-URC-RB	10.17	R6905-A46H-URC-RB	7.41
		1,400	Roller			V Groove	S6905-A46H-VG-RB	12.09	R6905-A46H-VG-RB	9.33
		1,600	Roller			Ductile Iron Crowned	S6905-A46H-DIC-RB	11.65	R6905-A46H-DIC-RB	8.89
		1,600	Roller			RollX™-WOW	S6905-A46H-RXW-RB	7.73	R6905-A46H-RXW-RB	5.97

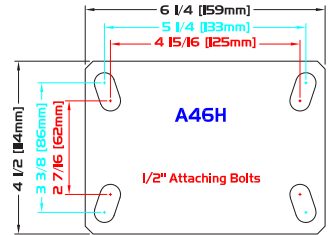
PLATE DIAGRAMS

STANDARD PLATE:

A46H

Plate Thickness: 1/4"

WHEEL		CASTER				PART NUMBER					
Diameter	Tread Width	Capacity Lbs.	Bearing Type	Swivel Radius	Overall Height	Wheel Type	Swivel	Caster Weight (lbs)	Rigid	Caster Weight (lbs)	
6"	2"	275	Precision	5 9/16"	7 1/2"	Flat Free	S6906-A46H-FFC-PBB	9.33	R6906-A46H-FFC-PBB	6.21	
		450	Ball			Balloon Cushion Rubber Grey	S6906-A46H-BARG-BB	10.25	R6906-A46H-BARG-BB	7.13	
		450	Roller			ProTech™ Crown	S6906-A46H-PRO-RB	9.39	R6906-A46H-PRO-RB	6.27	
		500	Roller			Moldon Alum. Rubber	S6906-A46H-MAR-RB	10.07	R6906-A46H-MAR-RB	6.95	
		550	Roller			Moldon Rubber	S6906-A46H-MR-RB	11.75	R6906-A46H-MR-RB	8.63	
		600	Roller			ProTech™ Flat	S6906-A46H-PROF-RB	9.39	R6906-A46H-PROF-RB	6.27	
		800	Roller			Polyolefin	S6906-A46H-POX-RB	8.76	R6906-A46H-POX-RB	5.64	
		900	Roller			High Temp Phenolic (475°)	S6906-A46H-HTPH-RB	10.45	R6906-A46H-HTPH-RB	7.33	
		900	Roller			Moldon Poly. Urethane	S6906-A46H-MPU-RB	9.85	R6906-A46H-MPU-RB	6.73	
		950	Precision			Envirothane™ Grey Crowned	S6906-A46H-UGC-PB	9.75	R6906-A46H-UGC-PB	6.63	
		1,000	Precision			PurThane™	S6906-A46H-PTN-PB	10.42	R6906-A46H-PTN-PB	7.30	
		1,100	Roller			Lava™ (475°)	S6906-A46H-LV-RB	9.16	R6906-A46H-LV-RB	6.04	
		1,100	Roller			Envirothane™	S6906-A46H-U-RB	10.03	R6906-A46H-U-RB	6.91	
		1,100	Precision			Envirothane™ Grey - PB	S6906-A46H-UG-PB	9.80	R6906-A46H-UG-PB	6.68	
		1,100	Roller			Envirothane™ Grey-WOW-RB	S6906-A46H-UGW-RB	10.03	R6906-A46H-UGW-RB	6.91	
		1,150	Roller			ALThane™	S6906-A46H-ALT-RB	9.50	R6906-A46H-ALT-RB	6.38	
		1,150	Roller			ALThane™-WOW	S6906-A46H-ALTWOW-RB	9.50	R6906-A46H-ALTWOW-RB	6.38	
		1,200	Roller			Lava™-WOW (475°)	S6906-A46H-LVW-RB	9.69	R6906-A46H-LVW-RB	7.57	
		1,200	Roller			Moldon Alum. Urethane	S6906-A46H-MAU-RB	10.03	R6906-A46H-MAU-RB	6.91	
		1,200	Roller			Phenolic	S6906-A46H-PH-RB	10.35	R6906-A46H-PH-RB	7.23	
		1,200	Roller			RollX™	S6906-A46H-RX-RB	9.11	R6906-A46H-RX-RB	6.00	
		1,200	Roller			Solid Steel	S6906-A46H-SS-RB	12.73	R6906-A46H-SS-RB	9.61	
		1,250	Roller			Moldon Urethane	S6906-A46H-UR-RB	12.21	R6906-A46H-UR-RB	9.09	
		1,250	Roller			Moldon Urethane Crown	S6906-A46H-URC-RB	11.62	R6906-A46H-URC-RB	8.50	
		1,400	Roller			Nyroll™	S6906-A46H-NYNW-RB	9.66	R6906-A46H-NYNW-RB	6.54	
		1,400	Roller			V Groove	S6906-A46H-VG-RB	13.85	R6906-A46H-VG-RB	10.73	
		1,600	Roller			Ductile Iron Crowned	S6906-A46H-DIC-RB	13.19	R6906-A46H-DIC-RB	10.07	
		1,600	Precision			RollX™-WOW-PB	S6906-A46H-RXW-PB	9.99	R6906-A46H-RXW-PB	7.87	
1,600	Roller	RollX™-WOW	S6906-A46H-RXW-RB	9.69	R6906-A46H-RXW-RB	7.57					
8"	2"	280	Precision	6 1/4"	10 1/8"	Flat Free	S6908-A46H-FFC-PBB	9.59	R6908-A46H-FFC-PBB	6.69	
		550	Ball			Balloon Cushion Rubber Grey	S6908-A46H-BARG-BB	12.01	R6908-A46H-BARG-BB	9.11	
		600	Roller			Moldon Alum. Rubber	S6908-A46H-MAR-RB	11.15	R6908-A46H-MAR-RB	8.25	
		600	Roller			Moldon Rubber	S6908-A46H-MR-RB	13.77	R6908-A46H-MR-RB	10.87	
		600	Roller			ProTech™ Crown	S6908-A46H-PRO-RB	10.46	R6908-A46H-PRO-RB	7.56	
		675	Roller			ProTech™ Flat	S6908-A46H-PROF-RB	10.46	R6908-A46H-PROF-RB	7.56	
		900	Roller			Polyolefin	S6908-A46H-POX-RB	9.44	R6908-A46H-POX-RB	6.54	
		1,000	Roller			Moldon Poly. Urethane	S6908-A46H-MPU-RB	10.61	R6908-A46H-MPU-RB	7.71	
		1,100	Roller			High Temp Phenolic (475°)	S6908-A46H-HTPH-RB	12.00	R6908-A46H-HTPH-RB	9.09	
		1,100	Precision			Envirothane™ Grey Crowned	S6908-A46H-UGC-PB	11.17	R6908-A46H-UGC-PB	8.27	
		1,200	Roller			ALThane™	S6908-A46H-ALT-RB	10.29	R6908-A46H-ALT-RB	7.39	
		1,200	Roller			Lava™ (475°)	S6908-A46H-LV-RB	10.18	R6908-A46H-LV-RB	7.28	
		1,200	Precision			PurThane™	S6908-A46H-PTN-PB	12.15	R6908-A46H-PTN-PB	9.25	
		1,200	Roller			Envirothane™	S6908-A46H-U-RB	11.23	R6908-A46H-U-RB	8.33	
		1,200	Precision			Envirothane™ Grey - PB	S6908-A46H-UG-PB	11.11	R6908-A46H-UG-PB	8.21	
		1,200	Roller			Envirothane™ Grey-WOW-RB	S6908-A46H-UGW-RB	11.23	R6908-A46H-UGW-RB	8.33	
		1,300	Roller			Lava™-WOW (475°)	S6908-A46H-LVW-RB	10.45	R6908-A46H-LVW-RB	7.64	
		1,400	Roller			Phenolic	S6908-A46H-PH-RB	11.89	R6908-A46H-PH-RB	9.00	
		1,400	Roller			RollX™	S6908-A46H-RX-RB	10.13	R6908-A46H-RX-RB	7.23	
		1,400	Roller			Solid Steel	S6908-A46H-SS-RB	15.33	R6908-A46H-SS-RB	12.43	
		1,400	Roller			V Groove	S6908-A46H-VG-RB	17.29	R6908-A46H-VG-RB	14.39	
		1,500	Roller			Moldon Alum. Urethane	S6908-A46H-MAU-RB	11.33	R6908-A46H-MAU-RB	8.43	
		1,500	Roller			Moldon Urethane	S6908-A46H-UR-RB	14.49	R6908-A46H-UR-RB	11.59	
		1,500	Roller			Moldon Urethane Crown	S6908-A46H-URC-RB	14.05	R6908-A46H-URC-RB	11.15	
		1,600	Roller			Nyroll™	S6908-A46H-NYNW-RB	10.74	R6908-A46H-NYNW-RB	7.84	
		1,600	Roller			RollX™-WOW	S6908-A46H-RXW-RB	10.45	R6908-A46H-RXW-RB	7.64	



* Caster weight based on Standard Plate