



TWIN TRACK™

KINGPINFREE™

6,000 LBS

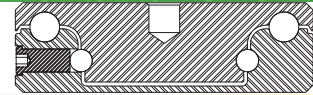
SERIES



FEATURES

KINGPIN: Kingpinfree
MATERIAL: SAE 1020 hot forged
RACEWAY: 4" and 2 3/4" diameter raceway; 1/2" and 3/8" diameter hardened steel ball bearings
BUSHING: Roller bearings with drilled hardened steel spanner bushing and steel side washers

AXLE&NUT: 1" axle and lock nut
FINISH: Corrosion resistant bright zinc
LUBRICATION: Grease nipple in race
HARDENED: Raceway
LEGS: 3/8" thick, double welded
LEG SPACING: 3 1/2"



EXCELLEN FOR:

- Abusive Conditions
- Tow lines
- Industrial platform trucks
- Most hardworking industrial functions
- Heavy service equipment
- Aircraft engine stands
- Ground support equipment
- Portable dollies
- Die & Tooling fixtures
- Economical handling of heavy loads where severe abuse is present

OPTIONS:

- PCB PolyCam Brake
- TSB Thumb Screw Brake
- UWB Universal Wheel Brake
- 4PSL 4 Position Swivel Lock
- RB Roller Bearing
- TB Tapered Bearing

FINISHES:

Inquiries on other finishes welcome



WHEEL		CASTER				PART NUMBER				
Diameter	Tread Width	Capacity Lbs.	Bearing Type	Swivel Radius	Overall Height	Wheel Type	Swivel	Caster Weight (lbs)	Rigid	Caster Weight (lbs)
6"	3"	750	Roller	5"	8 1/2"	Moldon Rubber	STT63-***-MRR-RB	27.67	RTT63-***-MRR-RB	20.71
		750	Tapered			Moldon Rubber - TB	STT63-***-MRR-TB	25.94	RTT63-***-MRR-TB	18.98
		1,750	Roller			Lava™-WOW (475°)	STT63-***-LVW-RB	20.86	RTT63-***-LVW-RB	13.90
		1,750	Tapered			Lava™-WOW - TB (475°)	STT63-***-LVW-TB	19.79	RTT63-***-LVW-TB	12.83
		2,000	Roller			Phenolic	STT63-***-PH-RB	22.57	RTT63-***-PH-RB	15.61
		2,500	Roller			Solid Steel	STT63-***-SS-RB	29.87	RTT63-***-SS-RB	22.91
		2,500	Roller			Solid Steel	STT63-***-SSR-RB	30.17	RTT63-***-SSR-RB	23.21
		2,500	Tapered			Solid Steel - TB	STT63-***-SSR-TB	28.44	RTT63-***-SSR-TB	21.48
		3,000	Tapered			HD Moldon Urethane - TB	STT63-***-URH-TB	26.38	RTT63-***-URH-TB	19.42
		3,250	Roller			RollX™-WOW	STT63-***-RXW-RB	20.86	RTT63-***-RXW-RB	13.90
		3,250	Tapered			RollX™-WOW - TB	STT63-***-RXW-TB	19.79	RTT63-***-RXW-TB	12.83
		6,000	Tapered			Ductile Iron Crowned - TB	STT63-***-DIC-TB	30.96	RTT63-***-DIC-TB	24.00
		6,000	Tapered			Forged Steel - TB	STT63-***-FS-TB	38.44	RTT63-***-FS-TB	31.48
		6,000	Precision			NyRock™	STT63-***-NYX-PB	21.56	RTT63-***-NYX-PB	14.60
6,000	Roller	Forged V Groove	STT63-***-VGF-RB	36.75	RTT63-***-VGF-RB	29.79				
6,000	Tapered	Forged V Groove - TB	STT63-***-VGF-TB	36.44	RTT63-***-VGF-TB	29.48				
8"	3"	900	Roller	6 3/8"	10 1/2"	Moldon Rubber	STT83-***-MRR-RB	31.41	RTT83-***-MRR-RB	24.35
		900	Tapered			Moldon Rubber - TB	STT83-***-MRR-TB	29.68	RTT83-***-MRR-TB	22.62
		2,000	Roller			Phenolic	STT83-***-PH-RB	24.81	RTT83-***-PH-RB	17.75
		2,100	Roller			Lava™-WOW (475°)	STT83-***-LVW-RB	23.16	RTT83-***-LVW-RB	16.10
		2,100	Tapered			Lava™-WOW - TB (475°)	STT83-***-LVW-TB	22.09	RTT83-***-LVW-TB	15.03
		2,500	Roller			Solid Steel	STT83-***-SS-RB	36.95	RTT83-***-SS-RB	29.89
		3,500	Roller			Solid Steel	STT83-***-SSR-RB	33.92	RTT83-***-SSR-RB	26.86
		3,700	Tapered			HD Moldon Urethane - TB	STT83-***-URH-TB	30.12	RTT83-***-URH-TB	23.06
		4,000	Roller			RollX™-WOW	STT83-***-RXW-RB	23.16	RTT83-***-RXW-RB	16.10
		4,000	Tapered			RollX™-WOW - TB	STT83-***-RXW-TB	22.09	RTT83-***-RXW-TB	15.03
		4,500	Tapered			Solid Steel - TB	STT83-***-SSR-TB	42.18	RTT83-***-SSR-TB	35.12
		4,500	Roller			V Groove	STT83-***-VGR-RB	41.49	RTT83-***-VGR-RB	34.43
		4,500	Tapered			V Groove - TB	STT83-***-VGR-TB	41.18	RTT83-***-VGR-TB	34.12
		5,000	Roller			Forged V Groove	STT83-***-VGF-RB	42.91	RTT83-***-VGF-RB	35.85
		5,000	Tapered			Forged V Groove - TB	STT83-***-VGF-TB	41.18	RTT83-***-VGF-TB	34.12
		6,000	Tapered			Ductile Iron Crowned - TB	STT83-***-DIC-TB	35.66	RTT83-***-DIC-TB	28.60
		6,000	Tapered			Forged Steel - TB	STT83-***-FS-TB	53.18	RTT83-***-FS-TB	46.12
		6,000	Precision			NyRock™	STT83-***-NYX-PB	25.08	RTT83-***-NYX-PB	18.02

* Caster weight based on Standard Plate



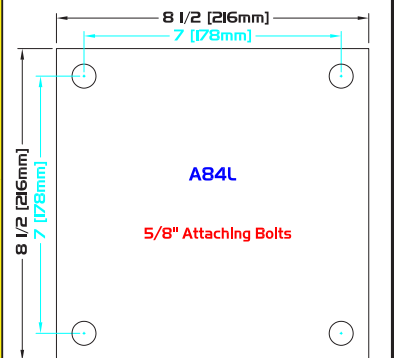
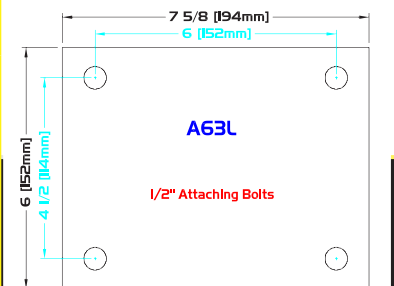
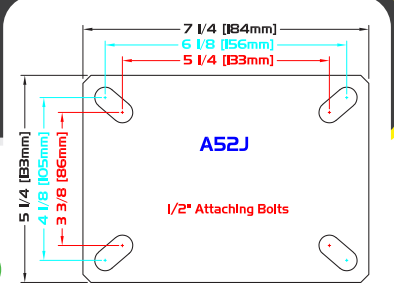
PCB
POLYCAM BRAKE



STANDARD PLATE: A52J

J - Plate Thickness: 3/8"

PLATE DIAGRAMS



WHEEL		CASTER				PART NUMBER					
Diameter	Tread Width	Capacity Lbs.	Bearing Type	Swivel Radius	Overall Height	Wheel Type	Swivel	Caster Weight (lbs)	Rigid	Caster Weight (lbs)	
10"	3"	1,000	Roller	7 1/4"	12 1/2"	Moldon Rubber	STT103-***-MRR-RB	35.41	RTT103-***-MRR-RB	28.49	
		1,000	Tapered			Moldon Rubber - TB	STT103-***-MRR-TB	33.68	RTT103-***-MRR-TB	26.76	
		2,500	Roller			Solid Steel	STT103-***-SS-RB	38.13	RTT103-***-SS-RB	31.21	
		2,800	Roller			Lava™-WOW (475°)	STT103-***-LVW-RB	25.86	RTT103-***-LVW-RB	18.94	
		2,800	Tapered			Lava™-WOW - TB (475°)	STT103-***-LVW-TB	24.79	RTT103-***-LVW-TB	17.87	
		2,900	Roller			Phenolic	STT103-***-PH-RB	28.01	RTT103-***-PH-RB	21.09	
		3,500	Roller			Solid Steel	STT103-***-SSR-RB	49.41	RTT103-***-SSR-RB	42.49	
		3,500	Tapered			Solid Steel - TB	STT103-***-SSR-TB	47.68	RTT103-***-SSR-TB	40.76	
		4,400	Tapered			HD Moldon Urethane - TB	STT103-***-URH-TB	42.12	RTT103-***-URH-TB	35.20	
		5,000	Roller			Forged V Groove	STT103-***-VGFS-RB	46.41	RTT103-***-VGFS-RB	39.49	
		5,000	Tapered			Forged V Groove - TB	STT103-***-VGFS-TB	44.68	RTT103-***-VGFS-TB	37.76	
		5,250	Roller			RollX™-WOW	STT103-***-RXW-RB	25.86	RTT103-***-RXW-RB	18.94	
		5,250	Tapered			RollX™-WOW - TB	STT103-***-RXW-TB	24.79	RTT103-***-RXW-TB	17.87	
		6,000	Tapered			Ductile Iron Crowned - TB	STT103-***-DIC-TB	45.94	RTT103-***-DIC-TB	39.02	
6,000	Tapered	Forged Steel - TB	STT103-***-FS-TB	72.68	RTT103-***-FS-TB	65.76					
6,000	Precision	NyRock™	STT103-***-NYX-PB	29.14	RTT103-***-NYX-PB	22.22					
6,000	Roller	HD Forged V Groove	STT103-***-VGFSH-RB	45.11	RTT103-***-VGFSH-RB	38.19					
6,000	Tapered	HD Forged V Groove - TB	STT103-***-VGFSH-TB	44.68	RTT103-***-VGFSH-TB	37.76					
12"	3"	1,200	Roller	8 1/2"	14 1/2"	Moldon Rubber	STT123-***-MRR-RB	41.77	RTT123-***-MRR-RB	34.11	
		1,200	Tapered			Moldon Rubber - TB	STT123-***-MRR-TB	40.04	RTT123-***-MRR-TB	32.38	
		2,500	Roller			Solid Steel	STT123-***-SS-RB	44.77	RTT123-***-SS-RB	37.11	
		2,500	Tapered			Solid Steel - TB	STT123-***-SSR-TB	45.04	RTT123-***-SSR-TB	37.38	
		3,500	Roller			Lava™-WOW (475°)	STT123-***-LVW-RB	30.64	RTT123-***-LVW-RB	22.98	
		3,500	Tapered			Lava™-WOW - TB (475°)	STT123-***-LVW-TB	29.57	RTT123-***-LVW-TB	21.91	
		3,500	Roller			Phenolic	STT123-***-PH-RB	32.47	RTT123-***-PH-RB	24.81	
		4,600	Tapered			HD Moldon Urethane - TB	STT123-***-URH-TB	43.48	RTT123-***-URH-TB	35.82	
		6,000	Tapered			Ductile Iron Crowned - TB	STT123-***-DIC-TB	56.58	RTT123-***-DIC-TB	48.92	
		6,000	Tapered			Forged Steel - TB	STT123-***-FS-TB	104.04	RTT123-***-FS-TB	96.38	
		6,000	Precision			NyRock™	STT123-***-NYX-PB	34.87	RTT123-***-NYX-PB	27.21	
		6,000	Roller			RollX™-WOW	STT123-***-RXW-RB	30.64	RTT123-***-RXW-RB	22.98	
		6,000	Tapered			RollX™-WOW - TB	STT123-***-RXW-TB	29.57	RTT123-***-RXW-TB	21.91	

* Caster weight based on Standard Plate

