



MONSOON KINGPINFREE™ 15,000 LBS SERIES



FEATURES

**KINGPIN:
RACEWAY:**

Kingpinfree
5" and 3" diameter raceway; 5/8" and 1/2"
diameter hardened steel ball bearings

BUSHING:

Roller bearings with drilled hardened steel
spanner bushing and steel side washers

**AXLE&NUT:
FINISH:**

1" axle and lock nut
Corrosion resistant bright zinc

HARDENED:

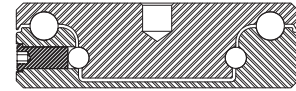
Raceway

LEGS:

Continuously welded for added strength

LEG SPACING:

3 1/2", 4 1/2"



EXCELLENT FOR:

- Abusive conditions
- Tow lines
- Heavy service equipment
- Aircraft engine stands
- Ground support equipment
- Portable dollies
- Die & Tooling fixtures



WHEEL

CASTER

PART NUMBER

Diameter	Tread Width	Capacity Lbs.	Bearing Type	Swivel Radius	Overall Height	Wheel Type	Swivel	Caster Weight (lbs)	Rigid		Caster Weight (lbs)			
6"	3"	750	Roller	5 1/2"	8 1/2"	Moldon Rubber	SMO63-***-MRR-RB	33.31	RMO63-***-MRR-RB	25.77				
		750	Tapered			Moldon Rubber - TB	SMO63-***-MRR-TB	32.89	RMO63-***-MRR-TB	25.35				
		1,750	Roller			Lava™-WOW (475°)	SMO63-***-LVW-RB	28.65	RMO63-***-LVW-RB	20.39				
		1,750	Tapered			Lava™-WOW - TB (475°)	SMO63-***-LVW-TB	27.32	RMO63-***-LVW-TB	19.06				
		2,500	Roller			Solid Steel	SMO63-***-SSR-RB	35.81	RMO63-***-SSR-RB	28.27				
		2,500	Tapered			Solid Steel - TB	SMO63-***-SSR-TB	35.39	RMO63-***-SSR-TB	27.85				
		3,000	Tapered			HD Moldon Urethane - TB	SMO63-***-URH-RB	32.90	RMO63-***-URH-RB	25.36				
		3,250	Roller			RollX™-WOW	SMO63-***-RXW-RB	28.65	RMO63-***-RXW-RB	20.39				
		3,250	Tapered			RollX™-WOW - TB	SMO63-***-RXW-TB	27.32	RMO63-***-RXW-TB	19.06				
	6,000	Roller	Forged V Groove	SMO63-***-VGF-RB	43.81	RMO63-***-VGF-RB	36.27							
	7,200	Precision	NyRock™	SMO63-***-NYX-PB	29.09	RMO63-***-NYX-PB	20.83							
	10,000	Tapered	Forged V Groove - TB	SMO63-***-VGF-TB	43.39	RMO63-***-VGF-TB	35.85							
	11,000	Tapered	Forged Steel - TB	SMO63-***-FS-TB	45.40	RMO63-***-FS-TB	37.86							
	15,000	Tapered	Ductile Iron Crowned - TB	SMO63-***-DIC-TB	37.92	RMO63-***-DIC-TB	30.38							
	4"	3"	3,000	Roller	5 1/2"	8 1/2"	Moldon Urethane	SMO64-***-URR-RB	41.20	RMO64-***-URR-RB	33.66			
			3,000	Tapered			Moldon Urethane - TB	SMO64-***-URR-TB	40.64	RMO64-***-URR-TB	33.10			
			3,600	Roller			HD Moldon Urethane	SMO64-***-URH-RB	41.20	RMO64-***-URH-RB	33.66			
			3,600	Tapered			HD Moldon Urethane - TB	SMO64-***-URH-TB	40.64	RMO64-***-URH-TB	33.10			
7,200			Precision	NyRock™			SMO64-***-NYX-PB	31.24	RMO64-***-NYX-PB	23.70				
8"			3"	900			Roller	6 1/2"	10 1/2"	Moldon Rubber	SMO83-***-MRR-RB	37.17	RMO83-***-MRR-RB	29.77
				900			Tapered			Moldon Rubber - TB	SMO83-***-MRR-TB	36.75	RMO83-***-MRR-TB	29.35
				2,100			Roller			Lava™-WOW (475°)	SMO83-***-LVW-RB	30.35	RMO83-***-LVW-RB	23.00
				2,100			Tapered			Lava™-WOW - TB (475°)	SMO83-***-LVW-TB	29.02	RMO83-***-LVW-TB	21.67
	3,700	Tapered		HD Moldon Urethane - TB	SMO83-***-URH-TB	41.25	RMO83-***-URH-TB			33.85				
	4,000	Roller		RollX™-WOW	SMO83-***-RXW-RB	30.35	RMO83-***-RXW-RB			23.00				
	4,000	Tapered		RollX™-WOW - TB	SMO83-***-RXW-TB	29.02	RMO83-***-RXW-TB			21.67				
	4,500	Roller		V Groove	SMO83-***-VGR-RB	48.67	RMO83-***-VGR-RB			41.27				
	4,500	Tapered		V Groove - TB	SMO83-***-VGR-TB	48.25	RMO83-***-VGR-TB			40.85				
	5,000	Roller	Forged V Groove	SMO83-***-VGF-RB	48.67	RMO83-***-VGF-RB	41.27							
	5,000	Tapered	Forged V Groove - TB	SMO83-***-VGF-TB	48.25	RMO83-***-VGF-TB	40.85							
	7,200	Precision	NyRock™	SMO83-***-NYX-PB	32.01	RMO83-***-NYX-PB	24.66							
	10,000	Tapered	Ductile Iron Crowned - TB	SMO83-***-DIC-TB	42.73	RMO83-***-DIC-TB	35.33							
	11,000	Tapered	Forged Steel - TB	SMO83-***-FS-TB	60.25	RMO83-***-FS-TB	52.85							
	4"	3"	3,800	Roller	6 1/2"	10 1/2"	Moldon Urethane	SMO84-***-URR-RB	45.06	RMO84-***-URR-RB	37.66			
			3,800	Tapered			Moldon Urethane - TB	SMO84-***-URR-TB	44.50	RMO84-***-URR-TB	37.10			
			4,500	Roller			HD Moldon Urethane	SMO84-***-URH-RB	45.06	RMO84-***-URH-RB	37.66			
			4,500	Tapered			HD Moldon Urethane - TB	SMO84-***-URH-TB	44.50	RMO84-***-URH-TB	37.10			
8,000			Precision	NyRock™			SMO84-***-NYX-PB	35.80	RMO84-***-NYX-PB	28.40				
8,400			Roller	Forged V Groove			SMO84-***-VGF-RB	49.06	RMO84-***-VGF-RB	41.66				
10,000			Tapered	Forged V Groove - TB			SMO84-***-VGF-TB	48.50	RMO84-***-VGF-TB	41.10				
15,000			Tapered	Forged Steel - TB			SMO84-***-FS-TB	74.50	RMO84-***-FS-TB	67.10				

OPTIONS:

- PCB PolyCam Brake
TSB Thumb Screw Brake
UWB Universal Wheel Brake
4PSL 4 Position Swivel Lock
RB Roller Bearing
TB Tapered Bearing



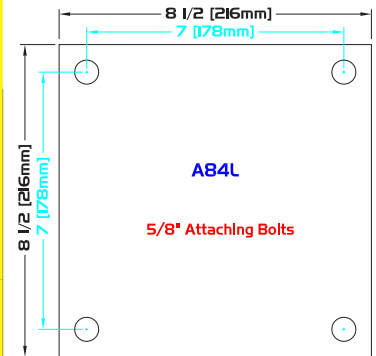
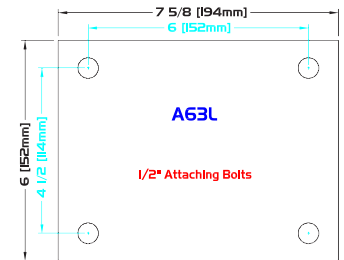
PCB
POLYCAM BRAKE



STANDARD PLATE: A63L

L - Plate Thickness: 1/2"

PLATE DIAGRAMS



WHEEL		CASTER		PART NUMBER							
Diameter	Tread Width	Capacity Lbs.	Bearing Type	Swivel Radius	Overall Height	Wheel Type	Swivel	Caster Weight (lbs)	Rigid	Caster Weight (lbs)	
10"	3"	1,000	Roller	7 1/2"	12 1/2"	Moldon Rubber	SMO103-***-MRR-RB	41.45	RM0103-***-MRR-RB	34.27	
		1,000	Tapered			Moldon Rubber - TB	SMO103-***-MRR-TB	41.03	RM0103-***-MRR-TB	33.85	
		2,800	Roller			Lava™-WOW (475°)	SMO103-***-LVW-RB	34.05	RM0103-***-LVW-RB	26.15	
		2,800	Tapered			Lava™-WOW - TB (475°)	SMO103-***-LVW-TB	32.72	RM0103-***-LVW-TB	24.82	
		4,400	Tapered			HD Moldon Urethane - TB	SMO103-***-URH-TB	49.03	RM0103-***-URH-TB	41.85	
		5,000	Roller			Forged V Groove	SMO103-***-VGFS-RB	52.45	RM0103-***-VGFS-RB	45.27	
		5,000	Tapered			Forged V Groove - TB	SMO103-***-VGFS-TB	52.03	RM0103-***-VGFS-TB	44.85	
		5,250	Roller			RollX™-WOW	SMO103-***-RXW-RB	34.05	RM0103-***-RXW-RB	26.15	
		5,250	Tapered			RollX™-WOW - TB	SMO103-***-RXW-TB	32.72	RM0103-***-RXW-TB	24.82	
		6,000	Roller			HD Forged V Groove	SMO103-***-VGFSH-RB	52.45	RM0103-***-VGFSH-RB	45.27	
	6,000	Tapered	HD Forged V Groove - TB	SMO103-***-VGFSH-TB	52.03	RM0103-***-VGFSH-TB	44.85				
	7,200	Precision	NyRock™	SMO103-***-NYX-PB	37.07	RM0103-***-NYX-PB	29.17				
	10,000	Tapered	Ductile Iron Crowned - TB	SMO103-***-DIC-TB	53.29	RM0103-***-DIC-TB	46.11				
	11,000	Tapered	Forged Steel - TB	SMO103-***-FS-TB	80.03	RM0103-***-FS-TB	72.85				
	4"	1,500	Roller	7 1/2"	12 1/2"	Moldon Rubber	SMO104-***-MRR-RB	58.84	RM0104-***-MRR-RB	51.66	
		1,500	Tapered			Moldon Rubber - TB	SMO104-***-MRR-TB	58.28	RM0104-***-MRR-TB	51.10	
		5,000	Roller			Moldon Urethane	SMO104-***-URR-RB	58.84	RM0104-***-URR-RB	51.66	
		5,000	Tapered			Moldon Urethane - TB	SMO104-***-URR-TB	58.28	RM0104-***-URR-TB	51.10	
		6,000	Roller			HD Moldon Urethane	SMO104-***-URH-RB	58.84	RM0104-***-URH-RB	51.66	
		6,000	Tapered			HD Moldon Urethane - TB	SMO104-***-URH-TB	58.28	RM0104-***-URH-TB	51.10	
8,000		Precision	NyRock™			SMO104-***-NYX-PB	41.34	RM0104-***-NYX-PB	34.16		
8,400		Roller	Forged V Groove			SMO104-***-VGFS-RB	73.84	RM0104-***-VGFS-RB	66.66		
10,000		Tapered	Forged V Groove - TB			SMO104-***-VGFS-TB	73.28	RM0104-***-VGFS-TB	66.10		
15,000		Tapered	Forged Steel - TB			SMO104-***-FS-TB	102.28	RM0104-***-FS-TB	95.10		
12"	3"	1,200	Roller	8 1/2"	15 1/2"	Moldon Rubber	SMO123-***-MRR-RB	47.97	RM0123-***-MRR-RB	41.27	
		1,200	Tapered			Moldon Rubber - TB	SMO123-***-MRR-TB	47.55	RM0123-***-MRR-TB	40.85	
		3,500	Roller			Lava™-WOW (475°)	SMO123-***-LVW-RB	39.00	RM0123-***-LVW-RB	31.57	
		3,500	Tapered			Lava™-WOW - TB (475°)	SMO123-***-LVW-TB	37.67	RM0123-***-LVW-TB	30.24	
		4,600	Tapered			HD Moldon Urethane - TB	SMO123-***-URH-TB	50.55	RM0123-***-URH-TB	43.85	
		6,500	Roller			RollX™-WOW	SMO123-***-RXW-RB	39.00	RM0123-***-RXW-RB	31.57	
		6,500	Tapered			RollX™-WOW - TB	SMO123-***-RXW-TB	37.67	RM0123-***-RXW-TB	30.24	
	7,200	Precision	NyRock™	SMO123-***-NYX-PB	42.97	RM0123-***-NYX-PB	35.54				
	10,000	Tapered	Ductile Iron Crowned - TB	SMO123-***-DIC-TB	64.09	RM0123-***-DIC-TB	57.39				
	11,000	Tapered	Forged Steel - TB	SMO123-***-FS-TB	111.55	RM0123-***-FS-TB	104.85				
	4"	1,600	Roller	8 1/2"	15 1/2"	Moldon Rubber	SMO124-***-MRR-RB	57.36	RM0124-***-MRR-RB	50.66	
		1,600	Tapered			Moldon Rubber - TB	SMO124-***-MRR-TB	56.80	RM0124-***-MRR-TB	50.10	
		5,500	Roller			Moldon Urethane	SMO124-***-URR-RB	57.36	RM0124-***-URR-RB	50.66	
		5,500	Tapered			Moldon Urethane - TB	SMO124-***-URR-TB	56.80	RM0124-***-URR-TB	50.10	
6,600		Roller	HD Moldon Urethane			SMO124-***-URH-RB	57.36	RM0124-***-URH-RB	50.66		
6,600		Tapered	HD Moldon Urethane - TB			SMO124-***-URH-TB	56.80	RM0124-***-URH-TB	50.10		
8,000		Precision	NyRock™			SMO124-***-NYX-PB	48.67	RM0124-***-NYX-PB	41.97		
15,000	Tapered	Forged Steel - TB	SMO124-***-FS-TB	128.36	RM0124-***-FS-TB	121.66					



* Caster weight based on Standard Plate