



# MOLDON URETHANE WHEELS

## 600-6,600LBS



### FEATURES

**BEARINGS:** Plain, Ball, Delrin, Nylon, Roller, Caged Roller, Tapered  
**TEMPERATURE:** -20°F to 175°F  
**COLOURS:** Black Core, Red Tread and Black Core, Orange Rust Tread  
**DUROMETER:** 93.5 (+/- 1.5) A Scale for UR, 70 D Scale for URH

**DESCRIPTION:** Moldon Urethane tread is secured to semi steel core. This wheel allows for an easy, smooth, quiet ride. The Moldon Urethane provides excellent floor protection while carrying extremely heavy loads. Tread is resistant to most chemicals.

### EXCELLENT FOR:

- Floor protection
- Factory use
- Abusive applications
- Platform and Stock trucks
- Resistant to most chemicals
- Heavy material handling
- Outdoor use
- Heavy loads
- Smooth Rolling
- Longevity



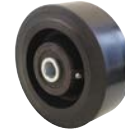
MOLDON URETHANE



MOLDON URETHANE CROWN



MOLDON URETHANE - TB



HD MOLDON URETHANE - TB

### WHEEL

### PART NUMBER

Diameter	Tread Width	Capacity Lbs.	Hub Length	Standard Bore	Alternative Bore	Bearing Type	Part Number	Wheel Weight (lbs)
4"	1 1/2"	600	1 5/8"	1 3/16"	-	Plain	W-6204-UR	1.66
		600	1 13/16"	1/2"	3/8" * 5/8" * 3/4"	Roller	W-6204-UR-RB	1.96
	2"	800	2 3/16"	1 3/16"	-	Plain	W-7004-UR	2.30
		800	2 3/8"	1/2"	3/8" * 5/8" * 3/4"	Roller	W-7004-UR-RB	2.74
		800	2 3/16"	3/16"	-	Plain	W-7004-URC	2.42
		800	2 3/8"	1/2"	3/8" * 5/8" * 3/4"	Roller	W-7004-URC-RB	2.86
5"	1 1/2"	800	1 5/8"	1 3/16"	-	Plain	W-6205-UR	2.68
		800	1 13/16"	1/2"	3/8" * 5/8" * 3/4"	Roller	W-6205-UR-RB	2.98
	2"	1,200	2 3/16"	1 3/16"	-	Plain	W-7005-UR	3.34
		1,200	2 3/8"	1/2"	3/8" * 5/8" * 3/4"	Roller	W-7005-UR-RB	3.78
		1,200	2 3/16"	1 3/16"	-	Plain	W-7005-URC	2.64
		1,200	2 3/8"	1/2"	3/8" * 5/8" * 3/4"	Roller	W-7005-URC-RB	3.08
6"	1 1/2"	800	1 5/8"	1 3/16"	-	Plain	W-6206-UR	3.16
		800	1 13/16"	1/2"	3/8" * 5/8" * 3/4"	Roller	W-6206-UR-RB	3.46
	2"	1,250	2 3/16"	1 3/16"	-	Plain	W-7006-UR	4.16
		1,250	2 3/8"	1/2"	3/8" * 5/8" * 3/4"	Roller	W-7006-UR-RB	4.60
		1,250	2 3/16"	1 3/16"	-	Plain	W-7006-URC	3.57
		1,250	2 3/8"	1/2"	3/8" * 5/8" * 3/4"	Roller	W-7006-URC-RB	4.01
	2 1/2"	1,600	2 3/4"	1 15/16"	-	Plain	W-7106-UR	6.32
		1,600	2 27/32"	3/4"	1" * 1 1/4"	Roller	W-7106-UR-RB	7.97
	3"	2,000	3 1/4"	1 15/16"	-	Plain	W-7506-UR	7.90
		2,000	3 7/16"	3/4"	1" * 1 1/4"	Roller	W-7506-UR-RB	9.79
		2,000	3 1/4"	3/4"	1" * 1 1/4"	Tapered	W-9106-UR-TB *	11.22
		3,000	3 1/2"	1 1/4"	3/4" * 1"	Tapered	W-9106-URH-TB*	9.50

### OPTIONS:

- BB Ball Bearing
- BR Bronze Bushing
- DB Delrin Bearing
- NB Nylon Roller Bearing
- NBSS Stainless Steel Nylon Roller Bearing
- RB Roller Bearing
- RBC Caged Roller Bearing
- RBSS Stainless Steel Roller Bearing
- SSW Steel Side Washer
- SWH Heat-treated Side Washer
- TB Tapered Bearing
- TG Thread Guards

\* 1" Thick tread

### WHEELS

WHEEL						PART NUMBER		
Diameter	Tread Width	Capacity Lbs.	Hub Length	Standard Bore	Alternative Bore	Bearing Type	Part Number	Wheel Weight (lbs)
6"	4"	3,000	4 1/4"	2 7/16"	-	Plain	W-9664-URR*	17.00
		3,000	4 1/4"	1 1/4"	1 1/2"	Roller	W-9664-URR-RB*	17.00
		3,000	4 1/2"	1 1/4"	1"	Tapered	W-9664-URR-TB*	17.00
		3,600	4 1/4"	2 7/16"	-	Plain	W-9664-URH*	17.00
		3,600	4 1/4"	1 1/4"	1"* 1 1/2"	Roller	W-9664-URH-RB*	17.00
		3,600	4 1/2"	1 1/4"	1"	Tapered	W-9664-URH-TB*	17.00
		3,600	4 1/2"	1 1/4"	1"	Tapered	W-9664-URH-TB*	17.00
8"	2"	1,500	2 3/16"	1 3/16"	-	Plain	W-7008-UR	6.20
		1,500	2 3/8"	1/2"	3/8" * 5/8" * 3/4"	Roller	W-7008-UR-RB	6.64
		1,500	2 3/16"	1 3/16"	-	Plain	W-7008-URC	5.76
		1,500	2 3/8"	1/2"	3/8" * 5/8" * 3/4"	Roller	W-7008-URC-RB	6.20
	2 1/2"	2,000	2 3/4"	1 15/16"	-	Plain	W-7108-UR	11.22
		2,000	2 27/32"	3/4"	1"* 1 1/4"	Roller	W-7108-UR-RB	12.87
	3"	2,500	3 1/4"	1 15/16"	-	Plain	W-7508-UR	12.34
		2,500	3 7/16"	3/4"	1"* 1 1/4"	Roller	W-7508-UR-RB	14.23
		2,500	3 1/4"	3/4"	1"* 1 1/4"	Tapered	W-9108-UR-TB*	17.70
		3,700	3 1/2"	1 1/4"	3/4" * 1"	Tapered	W-9108-URH-TB *	17.00
	4"	3,800	4 1/4"	2 7/16"	-	Plain	W-9684-URR	20.00
		3,800	4 1/4"	1 1/4"	1 1/2"	Roller	W-9684-URR-RB	20.00
		3,800	4 1/2"	1 1/4"	1"	Tapered	W-9684-URR-TB	20.00
		4,500	4 1/4"	2 7/16"	-	Plain	W-9684-URH	20.00
		4,500	4 1/4"	1 1/4"	1"* 1 1/2"	Roller	W-9684-URH-RB	20.00
		4,500	4 1/2"	1 1/4"	1"	Tapered	W-9684-URH-TB	20.00
10"	2 1/2"	2,200	2 3/4"	1 15/16"	-	Plain	W-7110-UR	14.02
		2,200	2 27/32"	3/4"	1"* 1 1/4"	Roller	W-7110-UR-RB	15.67
	3"	3,000	3 1/4"	1 15/16"	-	Plain	W-7510-UR	16.64
		3,000	3 7/16"	3/4"	1"* 1 1/4"	Roller	W-7510-UR-RB	18.53
		3,000	3 1/4"	3/4"	1"* 1 1/4"	Tapered	W-9110-UR-TB*	23.46
4,400	3 1/2"	1 1/4"	3/4" * 1"	Tapered	W-9110-URH-TB*	24.00		

\* 1" Thick tread

### WHEELS

WHEEL						PART NUMBER			
Diameter	Tread Width	Capacity Lbs.	Hub Length	Standard Bore	Alternative Bore	Bearing Type	Part Number	Wheel Weight (lbs)	
10"	4"	5,000	4 1/4"	2 7/16"	-	Plain	W-96104-URR*	33.00	
		5,000	4 1/4"	1 1/4"	1" * 1 1/2"	Roller	W-96104-URR-RB*	33.00	
		5,000	4 1/2"	1 1/4"	1"	Tapered	W-96104-URR-TB*	33.00	
		6,000	4 1/4"	2 7/16"	-	Plain	W-96104-URH*	33.00	
		6,000	4 1/4"	1 1/4"	1" * 1 1/2"	Roller	W-96104-URH-RB*	33.00	
		6,000	4 1/2"	1 1/4"	1"	Tapered	W-96104-URH-TB*	33.00	
		12"	2 1/2"	2,500	2 3/4"	1 15/16"	-	Plain	W-7112-UR
2,500	2 27/32"			3/4"	1" * 1 1/4"	Roller	W-7112-UR-RB	20.81	
3"	3,500		3 1/4"	1 15/16"	-	Plain	W-7512-UR	21.74	
	3,500		3 7/16"	3/4"	1" * 1 1/4"	Roller	W-7512-UR-RB	23.63	
	3,500		3 1/4"	3/4"	-	Tapered	W-9112-UR-TB *	31.22	
	4,600		3 1/2"	1 1/4"	3/4" * 1"	Tapered	W-9112-URH-TB *	24.00	
4"	5,500		4 1/4"	2 7/16"	-	Plain	W-96124-URR *	30.00	
	5,500		4 1/4"	1 1/4"	1 1/2"	Roller	W-96124-URR-RB *	30.00	
	5,500		4 1/2"	1 1/4"	1"	Tapered	W-96124-URR-TB *	30.00	
	6,600		4 1/4"	2 7/16"	-	Plain	W-96124-URH *	30.00	
	6,600		4 1/4"	1 1/4"	1" * 1 1/2"	Roller	W-96124-URH-RB *	30.00	
	6,600		4 1/2"	1 1/4"	1"	Tapered	W-96124-URH-TB *	30.00	

\* 1" Thick tread