



# ROLLX™

## WHEELS

# 400-6,500 LBS



### FEATURES

**BEARINGS:** Plain, Ball, Delrin, Nylon, Precision, Roller, Caged Roller  
**TEMPERATURE:** -45°F to 180°F (with Plastic Side Washer)  
 -45°F to 250°F (with Steel Side Washer)  
**COLOURS:** Black  
**DESCRIPTION:** This non-marking wheel features an exclusively developed thermoplastic nylon material which is excellent for high load capacities.

The RollX™ wheel is extremely ergonomically efficient, as it requires minimum effort to roll and swivel with heavy loads. It resists hard impacts and is resistant to most chemicals, solvents, gases, acids, steam cleaning and does not absorb water! This wheel is ideal for industrial and institutional applications.

**DUROMETER:** 85 (+/-5) D Scale

### EXCELLENCE FOR:

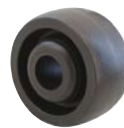
- Floor protection
- Factory use
- Push/Pull Ease
- Moist and wet environments
- Waste bins
- Platform and Stock trucks
- Outdoor use and heavy loads
- Heavy material handling
- Smooth, easy rolling and longevity
- Towline applications
- Abusive applications
- Ease of maneuverability
- Prolonging of equipment life



ROLLX™



ROLLX™(for WOW)



ROLLX™(WOW)



ROLLX™(WOW)



ROLLX™(WOW)

### WHEEL

### PART NUMBER

Diameter	Tread Width	Capacity Lbs.	Hub Length	Standard Bore	Alternative Bore	Bearing Type	Part Number	Wheel Weight (lbs)
1 3/4"	1 1/2"	800	1 9/16"	12mm	-	Roller	W-54175-RX-RB-12MM	0.30
2 5/8"	1 1/2"	550	1 9/16"	12mm	-	Roller	W-54260-RX-RB-12MM	0.43
3"	1 1/4"	400	1 9/16"	1/2"	-	Plain	W-1930-RX	0.32
		400	1 9/16"	5/16"	3/8"	Steel	W-1930-RX	0.3
	1 1/2"	700	1 5/8"	3/8"	5/16"	Steel	W-6203-RX	0.48
		700	1 5/8"	1 3/16"	1/2" * 5/8"	Plain	W-6203-RX	0.42
		700	1 13/16"	1/2"	3/8" * 5/8" * 3/4"	Roller	W-6203-RX-RB	0.82
	1 3/4"	1,000	2 1/4"	1 3/16"	-	Plain	W-GL30-RXW	0.52
1,000		2 1/4"	1/2"	5/8"	Roller	W-GL30-RXW-RB	0.83	
2"	1,200	2 3/16"	1 3/16"	-	Plain	W-7003-RXW*	0.56	
	1,200	2 3/8"	3/4"	-	Plain	W-7003-RXW	1.30	
1,200	2 3/8"	1/2"	5/8" * 3/4"	Roller	W-7003-RXW-RB	1.01		
4"	1 1/4"	450	1 9/16"	1/2"	-	Plain	W-1940-RX	0.47
		450	1 9/16"	5/16"	3/8"	Steel	W-1940-RX	0.52
	1 1/2"	700	1 5/8"	3/8"	5/16"	Steel	W-6204-RX	0.77
		700	1 5/8"	1 3/16"	1/2" * 5/8"	Plain	W-6204-RX	0.71
		700	1 13/16"	1/2"	3/8" * 5/8" * 3/4"	Roller	W-6204-RX-RB	1.11
	1 3/4"	1,000	2 1/4"	1 3/16"	-	Plain	W-5640-RXW	0.70
1,000		2 1/4"	1/2"	5/8"	Roller	W-5640-RXW-RB	1.01	
2"	800	2 3/16"	1 3/16"	-	Plain	W-7004-RX*	0.63	
	800	2 3/8"	1/2"	5/8" * 3/4"	Roller	W-7004-RX-RB	0.98	
	1,400	2 3/16"	1 3/16"	-	Plain	W-7004-RXW*	0.89	
1,400	2 3/8"	3/4"	-	Plain	W-7004-RXW	0.94		
1,400	2 3/8"	1/2"	5/8" * 3/4"	Roller	W-7004-RXW-RB	1.33		
5"	1 1/4"	500	1 9/16"	1/2"	-	Plain	W-1950-RX	0.67
		500	1 9/16"	5/16"	3/8"	Steel	W-1950-RX	0.72
	1 1/2"	800	1 5/8"	3/8"	5/16"	Steel	W-6205-RX	1.05
800		1 5/8"	1 3/16"	1/2" * 5/8"	Plain	W-6205-RX	0.76	
800		1 13/16"	1/2"	3/8" * 5/8" * 3/4"	Roller	W-6205-RX-RB	1.37	

### OPTIONS:

- BB Ball Bearing
- BR Bronze Bushing
- DB Delrin Bearing
- NB Nylon Roller Bearing
- NBSS Stainless Steel Nylon Roller Bearing
- PB Precision Ball Bearing (for 6" RXW wheel only)
- PBB Precision Ball Bearing (for RXW 3" wheel tread only)
- RB Roller Bearing
- RBC Caged Roller Bearing
- RBSS Stainless Steel Roller Bearing
- SSW Steel Side Washer
- SWH Heat-treated Side Washer
- T Through Bore (2" wheel tread)
- TB Tapered Bearing (3" wheel tread)
- TG Thread Guards

### SPECIAL:

- Resistant to most chemicals
- Non-marking
- Debris rejecting tread
- Moisture Friendly
- Maintenance free
- One piece solid RollX™
- Same capacity as steel wheels
- Easy to assemble



◆ wheel has one closed side to eliminate side washer and for easier assembly

WHEELS

WHEEL						PART NUMBER			
Diameter	Tread Width	Capacity Lbs.	Hub Length	Standard Bore	Alternative Bore	Bearing Type	Part Number	Wheel Weight (lbs)	
5"	2"	1,000	2 3/16"	1 3/16"	-	Plain	W-7005-RX*	0.84	
		1,000	2 3/8"	1/2"	5/8" * 3/4"	Roller	W-7005-RX-RB	1.18	
		1,600	2 3/16"	1 3/16"	-	Plain	W-7005-RXW*	1.20	
		1,600	2 3/8"	3/4"	-	Plain	W-7005-RXW	1.38	
	2 1/2"	3"	1,600	2 3/8"	1/2"	5/8" * 3/4"	Roller	W-7005-RXW-RB	1.64
			2,200	2 3/4"	1 15/16"	-	Plain	W-7105-RX	1.62
			2,200	2 27/32"	3/4"	1" * 1 1/4"	Roller	W-7105-RX-RB	3.27
			2,750	3 1/4"	1 15/16"	-	Plain	W-7505-RXW	2.28
	3"	3"	2,750	3 7/16"	3/4"	-	Precision Ball	W-7505-RXW-PBB	3.45
			2,750	3 7/16"	3/4"	1" * 1 1/4"	Roller	W-7505-RXW-RB	4.17
			2,750	3 1/4"	3/4"	1" * 1 1/4"	Tapered	W-7505-RXW-TB	2.84
			2,750	3 1/4"	3/4"	-	-	-	-
6"	2"	1,200	2 3/16"	1 3/16"	-	Plain	W-7006-RX*	1.06	
		1,200	2 3/8"	1/2"	5/8" * 3/4"	Roller	W-7006-RX-RB	1.40	
		2,000	2 3/16"	1 3/16"	-	Plain	W-7006-RXW*	1.64	
		2,000	2 3/8"	3/4"	-	Plain	W-7006-RXW	1.53	
	3"	3"	2,000	2 3/8"	1/2"	3/4"	Precision	W-7006-RXW-PB	2.11
			2,000	2 3/8"	1/2"	5/8" * 3/4"	Roller	W-7006-RXW-RB	2.04
			3,250	3 1/4"	1 15/16"	-	Plain	W-7506-RXW	2.69
			3,250	3 7/16"	3/4"	-	Precision Ball	W-7506-RXW-PBB	3.86
			3,250	3 7/16"	3/4"	1" * 1 1/4"	Roller	W-7506-RXW-RB	4.58
			3,250	3 1/4"	3/4"	1" * 1 1/4"	Tapered	W-7506-RXW-TB	3.25
8"	2"	1,400	2 3/16"	1 3/16"	-	Plain	W-7008-RX*	1.84	
		1,400	2 3/8"	1/2"	5/8" * 3/4"	Roller	W-7008-RX-RB	2.10	
		2,000	2 3/16"	1 3/16"	-	Plain	W-7008-RXW*	2.25	
		2,000	2 3/8"	3/4"	-	Plain	W-7008-RXW	2.43	
	3"	3"	2,000	2 3/8"	1/2"	5/8" * 3/4"	Roller	W-7008-RXW-RB	2.69
			4,000	3 1/4"	1 15/16"	-	Plain	W-7508-RXW	4.25
			4,000	3 7/16"	3/4"	-	Precision Ball	W-7508-RXW-PBB	5.42
			4,000	3 7/16"	3/4"	1" * 1 1/4"	Roller	W-7508-RXW-RB	6.14
4,000	3"	4,000	3 1/4"	3/4"	1" * 1 1/4"	Tapered	W-7508-RXW-TB	4.81	
		4,000	3 1/4"	3/4"	-	-	-	-	
		4,000	3 1/4"	3/4"	-	-	-	-	
		4,000	3 1/4"	3/4"	-	-	-	-	
10"	2 1/2"	4,000	2 3/4"	1 15/16"	-	Plain	W-7110-RXW	4.58	
		4,000	2 27/32"	3/4"	1" * 1 1/4"	Roller	W-7110-RXW-RB	6.23	
	3"	3"	5,250	3 1/4"	1 15/16"	-	Plain	W-7510-RXW	6.45
			5,250	3 7/16"	3/4"	-	Precision Ball	W-7510-RXW-PBB	7.62
			5,250	3 7/16"	3/4"	1" * 1 1/4"	Roller	W-7510-RXW-RB	8.34
			5,250	3 1/4"	3/4"	1" * 1 1/4"	Tapered	W-7510-RXW-TB	7.01
			5,250	3 1/4"	3/4"	-	-	-	-
			5,250	3 1/4"	3/4"	-	-	-	-
12"	3"	6,500	3 1/4"	1 15/16"	-	Plain	W-7512-RXW	9.87	
		6,500	3 7/16"	3/4"	-	Precision Ball	W-7512-RXW-PBB	11.04	
		6,500	3 7/16"	3/4"	1" * 1 1/4"	Roller	W-7512-RXW-RB	11.76	
		6,500	3 1/4"	3/4"	1" * 1 1/4"	Tapered	W-7512-RXW-TB	10.43	

◆ wheel has one closed side to eliminate side washer and for easier assembly