



V GROOVE WHEELS 300-15,000 LBS



FEATURES

BEARINGS: Plain, Ball, Delrin, Nylon, Roller, Caged Roller, Tapered
TEMPERATURE: -45°F to 180°F (standard),
 -45°F to 800°F (with Roller bearing & Steel side washers)
COLOURS: Silver
DESCRIPTION: V Groove wheels, made of cast iron, are designed to operate on inverted angle iron tracks.

This enables heavy loads to be guided along the tracks with complete control instead of possibly doing damage to industrial floors and equipment. Because the tread is flat on the bottom, the V Groove wheel can be used on normal floor surfaces. Available in Stainless Steel upon request.

EXCELLENT FOR:

- Guided industrial
- Material handling
- Waste bins
- Assembly lines
- Paint lines



V GROOVE



V GROOVE



FORGED V GROOVE

WHEEL

PART NUMBER

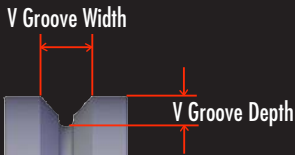
Diameter	Tread Width	Capacity Lbs.	Hub Length	Standard Bore	Alternative Bore	Bearing Type	Part Number	Wheel Weight (lbs)	
3"	1 1/4"	300	1 1/2"	1/2"	5/16" * 3/8"	Plain	W-1930-VG	1.30	
	1 1/2"	600	1 5/8"	1 3/16"	-	Plain	W-6203-VG	1.64	
		600	1 13/16"	1/2"	5/16" * 3/8" * 5/8" * 3/4"	Roller	W-6203-VG-RB	1.94	
4"	1 1/2"	600	1 5/8"	1 3/16"	-	Plain	W-6204-VG	2.60	
		600	1 13/16"	1/2"	5/16" * 3/8" * 5/8" * 3/4"	Roller	W-6204-VG-RB	2.90	
	2"	1,000	2 3/16"	1 3/16"	-	Plain	W-7004-VG	3.62	
5"	2"	1,000	2 3/8"	1/2"	3/8" * 5/8" * 3/4"	Roller	W-7004-VG-RB	4.06	
		1,400	2 3/16"	1 3/16"	-	Plain	W-7005-VG	4.56	
	1,400	2 3/8"	1/2"	3/8" * 5/8" * 3/4"	Roller	W-7005-VG-RB	5.00		
6"	2"	1,400	2 3/16"	1 3/16"	-	Plain	W-7006-VG	5.80	
		1,400	2 3/8"	1/2"	3/8" * 5/8" * 3/4"	Roller	W-7006-VG-RB	6.24	
	2 1/2"	2,500	2 3/4"	1 15/16"	-	Plain	W-7106-VG	8.00	
		2,500	2 27/32"	3/4"	1" * 1 1/4"	Roller	W-7106-VG-RB	9.65	
	3"	3,500	3,500	3 1/4"	1 15/16"	-	Plain	W-7506-VG	12.00
			3,500	3 7/16"	3/4"	1" * 1 1/4"	Roller	W-7506-VG-RB	13.89
6,000		6,000	3 1/4"	2 7/16"	-	Plain	W-9106-VGFS*	20.00	
		6,000	3 1/4"	1 1/4"	1 1/2"	Roller	W-9106-VGFS-RB*	20.00	
10,000		10,000	3 1/2"	1 1/4"	3/4" * 1"	Tapered	W-9106-VGFS-TB*	20.00	
		15,000	3 1/4"	3 1/8"	-	Plain	W-9106-VGFSH*	20.00	
15,000	3 1/2"	1 1/4"	1 1/2"	Tapered	W-9106-VGFSH-TB*	20.00			

OPTIONS:

- BB Ball Bearing
- BR Bronze Bushing
- DB Delrin Bearing
- NB Nylon Roller Bearing
- NBSS Stainless Steel Nylon Roller Bearing
- RB Roller Bearing
- RBC Caged Roller Bearing
- RBSS Stainless Steel Roller Bearing
- SSW Steel Side Washer
- SWH Heat-treated Side Washer
- TB Tapered Bearing
- TG Thread Guards

SPECIAL:

Available in Stainless Steel upon request



V-Groove Dimension:

Width X Depth

- 1 3/8" X 11/16" - Marked with (*)
- 1 3/4" X 7/8" - Marked with (+)
- 7/8" X 1/2" - All others

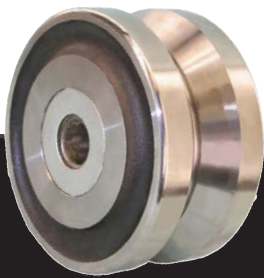
V GROOVE WHEELS

WHEELS

WHEEL

PART NUMBER

Diameter	Tread Width	Capacity Lbs.	Hub Length	Standard Bore	Alternative Bore	Bearing Type	Part Number	Wheel Weight (lbs)
8"	2"	1,400	2 3/16"	1 3/16"	-	Plain	W-7008-VG	9.00
		1,400	2 3/8"	1/2"	3/8" * 5/8" * 3/4"	Roller	W-7008-VG-RB	9.44
	2 1/2"	2,500	2 3/4"	1 15/16"	-	Plain	W-7108-VG	13.50
		2,500	2 27/32"	3/4"	1" * 1 1/4"	Roller	W-7108-VG-RB	15.15
	3"	3,500	3 1/4"	1 15/16"	-	Plain	W-7508-VG	17.28
		3,500	3 7/16"	3/4"	1" * 1 1/4"	Roller	W-7508-VG-RB	19.17
		4,500	3 1/4"	2 7/16"	-	Plain	W-9108-VGR*	24.00
		4,500	3 1/4"	3/4"	1" * 1 1/4" * 1 1/2"	Roller	W-9108-VGR-RB*	24.00
		4,500	3 1/2"	3/4"	1" * 1 1/4"	Tapered	W-9108-VGR-TB*	24.00
		5,000	3 1/4"	1 15/16"	-	Plain	W-9108-VGFS	24.00
		5,000	3 1/4"	3/4"	1" * 1 1/4"	Roller	W-9108-VGFS-RB	24.00
		5,000	3 1/2"	3/4"	1"	Tapered	W-9108-VGFS-TB	24.00
4"	8,400	4 1/4"	2 7/16"	-	Plain	W-9684-VGFS	24.00	
	8,400	4 1/4"	1 1/4"	1 1/2"	Roller	W-9684-VGFS-RB	24.00	
	10,000	4 1/2"	1 1/4"	1"	Tapered	W-9684-VGFS-TB ⁺	24.00	
	15,000	4 1/4"	3 1/8"	-	Plain	W-9684-VGFSH ⁺	24.00	
	15,000	4 1/2"	1 1/4"	1 1/2"	Tapered	W-9684-VGFSH-TB ⁺	24.00	
10"	3"	3,500	3 1/4"	1 15/16"	-	Plain	W-7510-VG	22.00
		3,500	3 7/16"	3/4"	1" * 1 1/4"	Roller	W-7510-VG-RB	23.89
		5,000	3 1/4"	1 15/16"	-	Plain	W-9110-VGFS*	27.00
		5,000	3 1/4"	3/4"	1" * 1 1/4"	Roller	W-9110-VGFS-RB*	27.00
		5,000	3 1/2"	3/4"	1"	Tapered	W-9110-VGFS-TB*	27.00
		6,000	3 1/4"	2 7/16"	-	Plain	W-9110-VGFSH*	27.00
	4"	8,400	4 1/4"	2 7/16"	-	Plain	W-96104-VGFS ⁺	48.00
		8,400	4 1/4"	1 1/4"	1" * 1 1/2"	Roller	W-96104-VGFS-RB ⁺	48.00
		10,000	4 1/2"	1 1/4"	1"	Tapered	W-96104-VGFS-TB ⁺	48.00
		15,000	4 1/4"	3 1/8"	-	Plain	W-96104-VGFSH ⁺	48.00
		15,000	4 1/2"	1 1/4"	1 1/2"	Tapered	W-96104-VGFSH-TB ⁺	48.00



V-Groove Dimension: Width X Depth

- 1 3/8" X 11/16" - Marked with (*)
- 1 3/4" X 7/8" - Marked with (+)
- 7/8" X 1/2" - All others